

école
normale
supérieure
paris-saclay

Welcome to l'ENS Paris-Saclay

École normale supérieure Paris-Saclay

4 avenue des sciences

91190 Gif-sur-Yvette

Rejoignez-nous :

-  <https://ens-paris-saclay.fr/>
-  @ensparissaclay
-  /school/ens-paris-saclay
-  ENS Paris-Saclay
-  @ENS_ParisSaclay
-  @ensparissaclay
-  <http://intranet.ens-paris-saclay.fr>

CONTENT

DISCOVER ENS PARIS-SACLAY

- 4 Key figures
- 5 School map

STUDY AT SCHOOL

- 6 Registration and re-registration
- 7 Student newsletter
- 8 Digital services
- 9 Language teaching
- 10 ENS Paris-Saclay Diploma

OPEN UP INTERNATIONALLY

- 11 Study at ENS Paris-Saclay
- 12 International Mobility
- 13 Welcome to our international students

GETTING ORGANIZED ON CAMPUS

- 14 Accommodation
- 15 Libraries
- 16 Catering

STUDENT LIFE

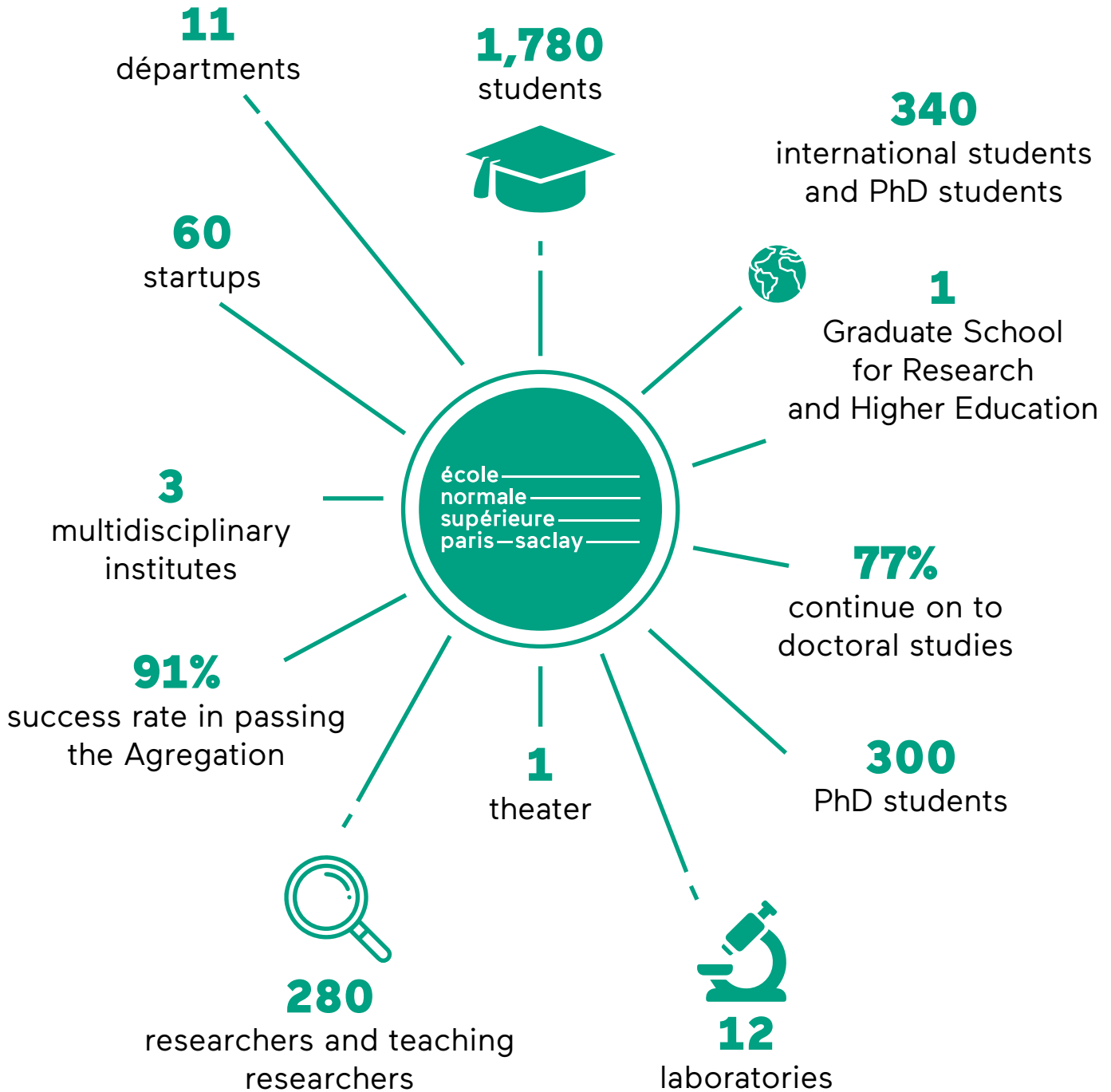
- 17 Sports
- 18 Student associations
- 19 Kokarde
- 20 Scène de recherche

GETTING INVOLVED IN CORPORATE LIFE

- 21 Healthcare
- 22 Disability support
- 23 Let's fight against gender based and sexual violence
- 24 Social action
- 25 Professional integration
- 26 Institutionnel life

DISCOVER ENS PARIS-SACLAY

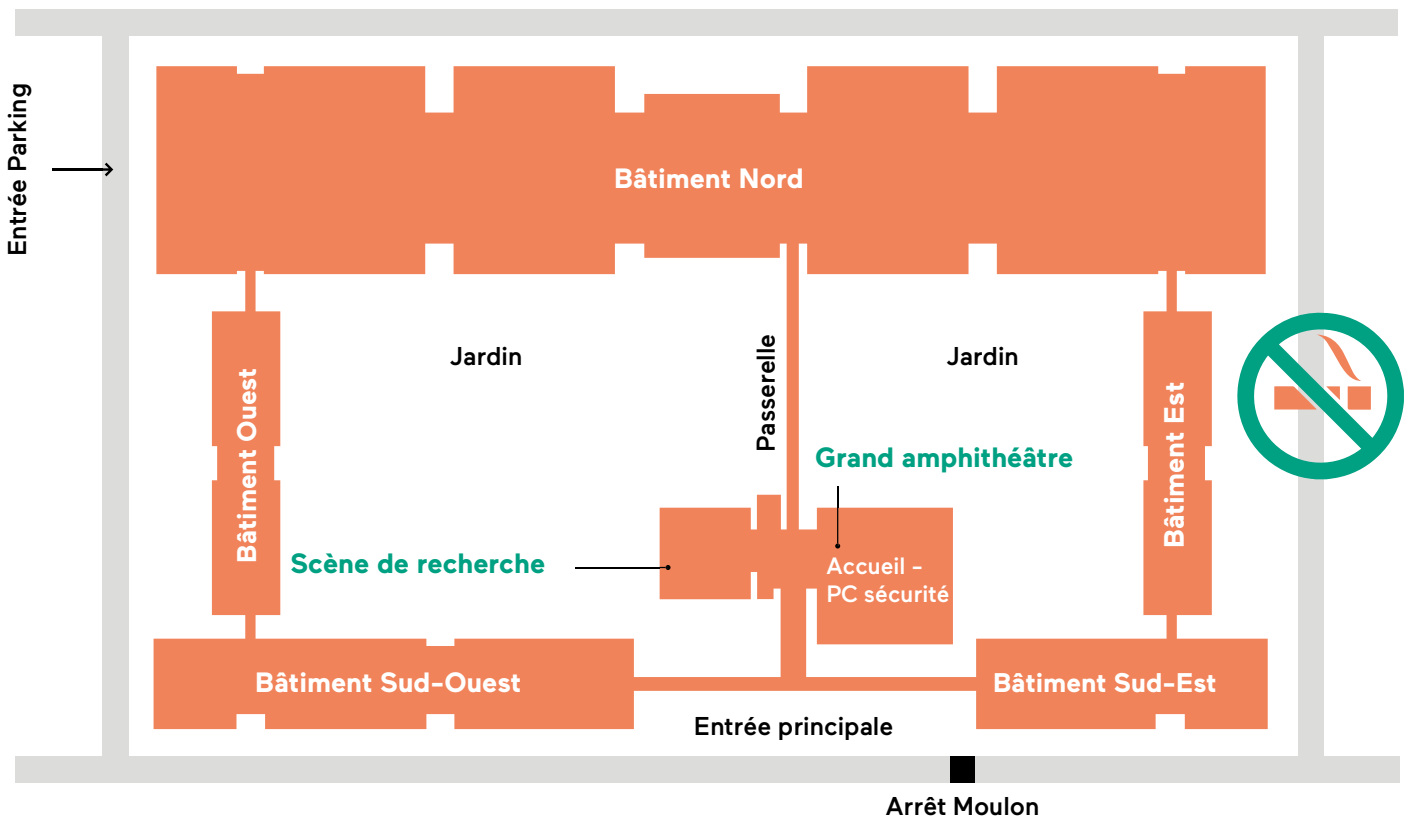
Key figures



School map

The **student card is required** to access the building and certain secure areas such as classrooms.

→ Discover the school map and its room numbering system



STUDY AT SCHOOL

Registration and re-registration

The administrative registration is done each year on the Coriandre online tool. Registration for the ENS Paris-Saclay diploma activities is done on the AND online tool.

Contact: sos-inscription-2023@ens-paris-saclay.fr

→ All the registration and reregistration steps for students and doctoral students

Student newsletter

The student newsletter is sent each week to all students in order to limit the clogging of your @ens-paris-saclay.fr mailboxes. It gathers all the administrative informations, the information relative to your education, the news about the school and the student life as well as the events.

→ [To contribute](#)

Digital services

After your registration, you will receive your ENS Paris-Saclay identifiers. It gives you access to a whole set of digital services:

- e-mail account: `firstname.lastname@ens-paris-saclay.fr`
- internet connection (eduroam/ENS-INVITE Wi-Fi)
- intranet website
- wireless video projection system (Intel Unite)
- network space
- system for sending large files
- access to administrative applications
- access to documentary resources
- access to the educational platform eCampus
- specific software depending on the department

Contact: dsve@ens-paris-saclay.fr

Please use exclusively the e-mail account for your exchanges with the pedagogical teams and the services, and consult it frequently.

→ [More informations](#)

→ [Access to the Campus educational platform](#)

Language teaching

The Paris-Saclay Language Center offers a wide range of language courses at different levels. You can register for these courses at the beginning of each academic year through our Language Department.

→ [Learn more about the Language Center](#)

Learning French

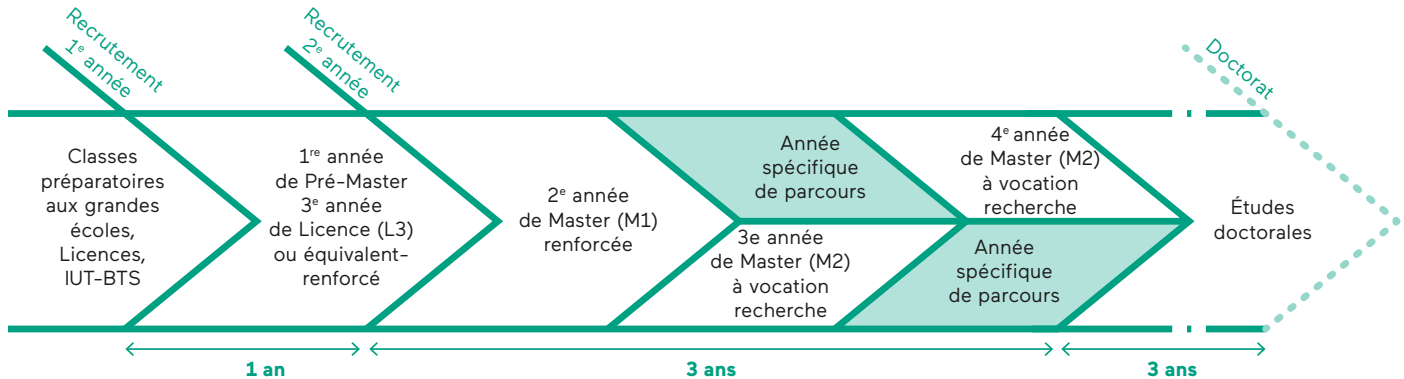
Several solutions for learning French are available to international students: intensive courses, classes, independent learning...

→ [Do you want to improve your level of French?](#)

ENS Paris-Saclay Diploma

ENS Paris-Saclay diploma is prepared in **4 years** and gives the **master degree**.

→ How the diploma works



OPEN UP INTERNATIONALLY

Study at ENS Paris-Saclay

If you're an international student, ENS Paris-Saclay has a variety of services and documentation available to you to prepare your stay in France.

Contact: ri-incoming@ens-paris-saclay.fr

→ Find out more about housing, visa and registration

→ Find out more about practical elements (Budget, Health Insurance, CAF, Bank...)

International Mobility

In 2022-23, 440 international mobilities including 93 *normaliens* in Year of Pre-Doctoral Research Abroad (ARPE).

You are encouraged to gain international experience throughout your ENS curriculum. This international experience can last from a few weeks to one year and take different forms: ARPE, study mobility, internship, embassy or consulate-based internship, teaching assistantship...

Contact: ri-outgoing@ens-paris-saclay.fr

Regardless of the state of advancement of your project, do not miss the events organized by our International Relations Office: Flashmob, ErasmusDays, Mobility week with thematic workshops...

- Find more about mobility types, our support and fundings opportunities for your project and your privileged contacts
- Get access to all our procedures and documents to prepare your mobility and to our lists of partners
- Get feedback from students who went abroad!

Welcome to our international students

Get help with your administrative procedures

To assist you with all your tasks and procedures, feel free to contact our partner **Science Accueil** (visas, residence permits, housing insurance, banking, French courses, etc).

Contact: ri-incoming@ens-paris-saclay.fr
procedures@science-accueil.org

→ [Find out more](#)

Participate in cultural and integration events.

Participate in the Buddy Program to be mentored

Your Buddy, a local student, will provide you with support for administrative procedures and to facilitate integration in your new study environment.

→ [Register on](#)

GETTING ORGANIZED ON CAMPUS

Accomodation

The **Guichet Unique Paris-Saclay (GUPS)** gathers housing offers from the different landlords of the Plateau de Saclay. If you're an international student, please contact our partner **Science Accueil** for some help in your housing search.

The **CASA housing platform** is dedicated to students and future students of Université Paris-Saclay. CASA regularly lists accommodation offers on the various university campuses, including accommodation offered by the CROUS, public and private landlords, individuals or housing associations. You will find accommodation in CROUS or private residences, homestays, shared accommodation or in exchange for services.

Contact: logement@ens-paris-saclay.fr

→ [All the informations](#)

Libraries

The **Lumen Learning Center** offers millions of books, journals and articles, both printed and digital, covering all disciplines. This documentation comes from the collections of ENS Paris-Saclay, CentraleSupélec and Université Paris-Saclay. The **FOCUS platform** allows you to access all the resources offered online by the university.

Located at the heart of the Moulon campus, the Lumen offers services designed for student success and campus life. You'll find library services, a wide range of events and innovative services:

- millions of books, magazines and articles, both printed and digital, covering all areas of activity on the Plateau de Moulon; a shuttle service and inter-library loans to complement the on-site offer;
- collaborative, educational and individual workspaces;
- support for student life: workshops, loan of board games, dedicated services, etc.;
- training courses, both in documentary research and in a variety of skills (design, photography, improvisation, etc.);
- a matériauthèque (material library); a space for presentation, information, advice and research on materials; offered by the DesignSpot;
- a catering service;
- wifi, copiers and printers, etc.

With a wide range of opening hours (evenings and weekends), and seating for 1,000, Lumen welcomes you whatever your needs!

contact.lumen@universite-paris-saclay.fr

→ [Open hours, locations and accessible collections](#)

Catering

Within the ENS building, you can find **3 catering areas**:

- 1 university restaurant managed by the CROUS (Kantine)
- 1 cafeteria (Kfé)
- 1 student life place (Kokarde)

Other types are available in the district (foodtrucks, brasserie...).

→ [Addresses and opening hours are available on](#)

STUDENT LIFE

Sports

Under the responsibility of the Sports Director, the School offers and organizes some **twenty sports activities** for students and members of staff (athletics, badminton, cheerleading, volleyball...). **A certificate of enrollment** for the current year and **a medical certificate** will be requested.

Contact: sport@ens-paris-saclay.fr

→ All the sports offer

Student associations

You will benefit from a great wealth of associations with **more than 50 sports**, artistic, cultural, humanitarian and environmental associations...

Contact: bureau.bde@lists.crans.org / bda.ensparissaclay@gmail.com



[@bde2023_ensps](#)

[@bda_ensps](#)

→ You can also consult the “Guide du Routard”

→ To know more

Kokarde

It's a place where you can drink, eat, discuss and get information about the different activities on campus. The BDE regularly organizes social events called **[POT]s** and **recreational facilities** (babyfoot, billiards...) are available.

Opening hours

Breaks: 10am and 3:30pm

Lunch: 12pm – 2pm

Bar: 6pm to midnight

The space also hosts evening events organized by associations and departments.

Opening hours

Every Tuesday night after the [POT]s from midnight.

Every Thursday night from midnight.

Scène de recherche

The Scène de recherche is both a professional theater and a research-creation platform. You can enjoy a rich artistic and cultural program throughout the year.

→ [Explore the training program and cultural season here](#)

GETTING INVOLVED IN CORPORATE LIFE

Healthcare

ENS Paris-Saclay offers a “*pôle santé et bien-être*” (**health and well-being center**) composed of:

- a prevention doctorat dedicated to students
- a nurse
- a psychologist

The consultations are **free** and **confidential**.

Contact: sante-bien-etre@ens-paris-saclay.fr

→ [Opening hours and how to make an appointment](#)

The **student prevention network** (RPE) also offers support for students in vulnerable situations or with mental health disorders.

Disability support

The “*relais handicap*” (**disability relay**) welcomes and accompanies students with disabilities, whether they are motor, sensory or psychological. This support includes the implementation of various study and examination arrangements.

Contact: relais.handicap@ens-paris-saclay.fr

→ To know more

Let's fight against gender based and sexual violence

ENS Paris-Saclay has set up a system for **reporting and dealing** with situations of discrimination, violence or harassment. All those involved in the system are trained and bound by **confidentiality** in listening to victims or witnesses and in dealing with situations.

For further information, please contact the ENS Paris-Saclay equality officer at mission.egalite@ens-paris-saclay.fr or contact France Victimes on the ENS Paris-Saclay number: **01 80 52 33 86**

Social action

Evaluate your rights to existing financial aid

(Download the application: <https://app.klaro.fr/>)

→ You can also contact the social service of CROUS of Versailles

For any information on the assistance provided by **ENS Paris-Saclay**, you can consult our website.

Professional integration

Throughout the year, workshops, events and meetings with partner companies will be offered to prepare you for the world of work.

- Contact the alumni association
- Some of our brilliant alumni...

Institutionnel life

Get involved in the School's governing bodies!

- **the board of Directors**
- **scientific Council**
- **student Life Committee**
- **health, safety and working conditions committee**